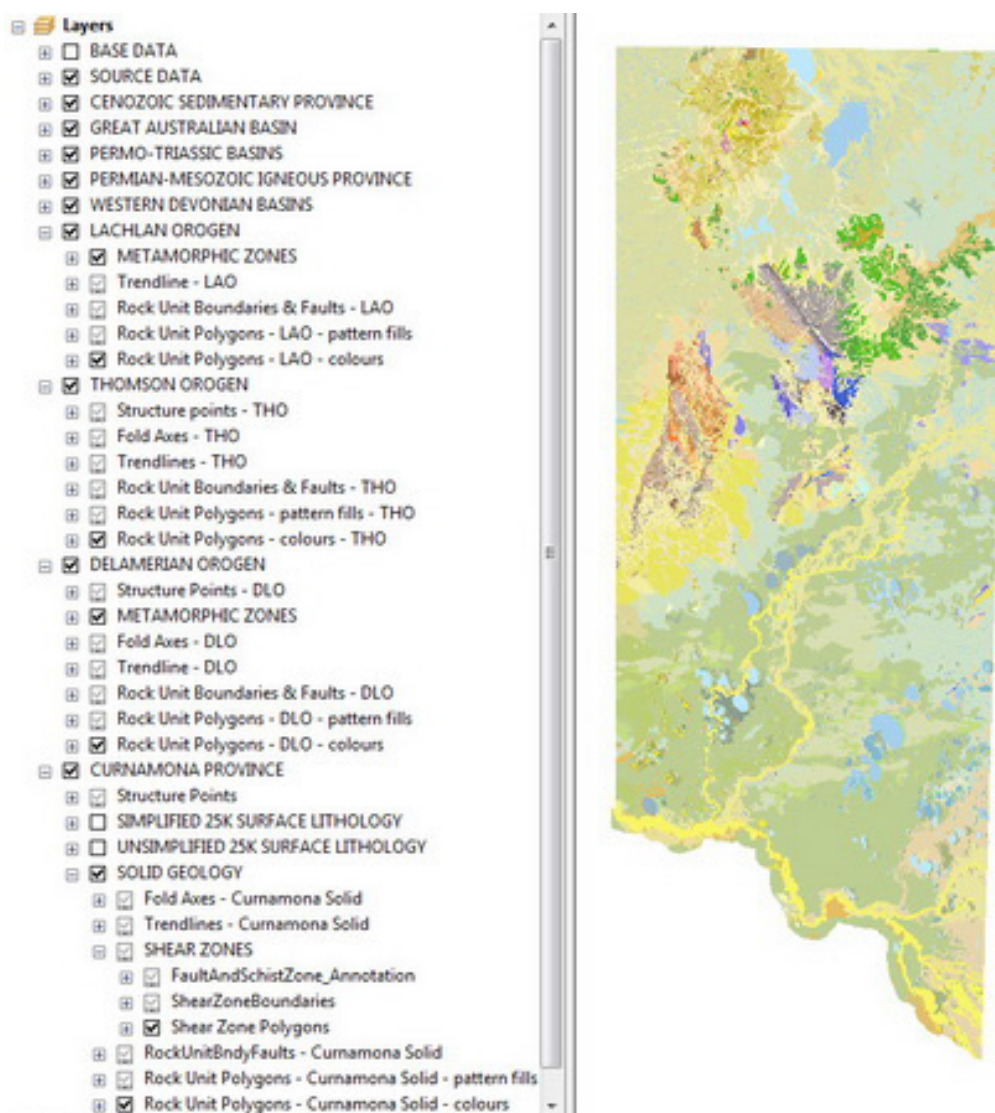


New South Wales seamless geology Zone 54 data release

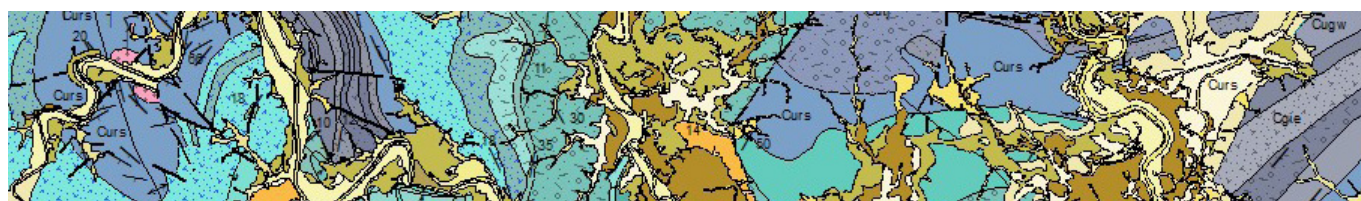


The seamless geology data package for UTM Zone 54 (i.e. far western New South Wales from the South Australian border to 144°E longitude) was officially released in December 2016. The package is a compilation of the best available vector geology data for Zone 54.

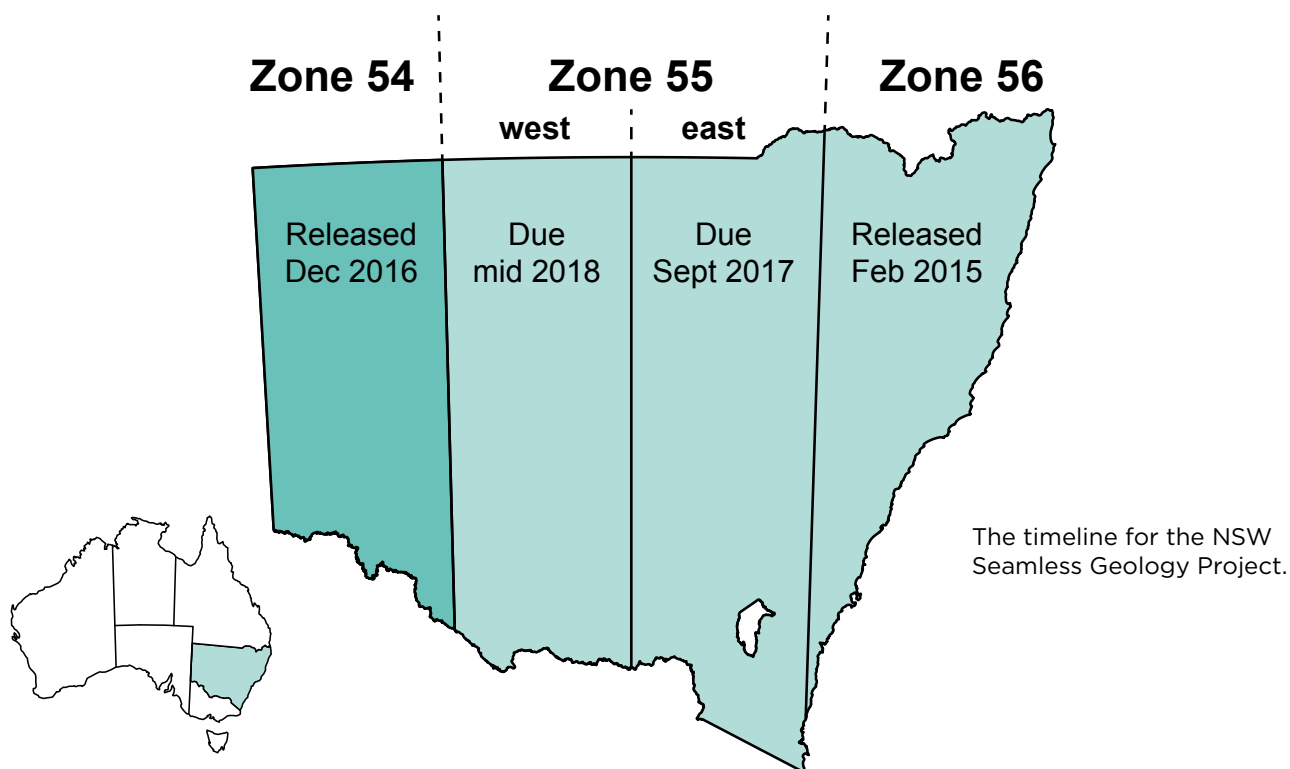
The geology data has been compiled from nearly 200 existing maps using an internally consistent database schema. Edge-match problems between geological maps of different eras have been resolved and, using geophysical and drillhole data, many of the geological layers have been inferred under overlying cover sequences to give a series of solid geology layers showing major geological subdivisions in subsurface as well as outcrop. The new data package now supports the popular free GIS software QGIS for the first time, in addition to ESRI ArcGIS and MapInfo.



A screenshot of Zone 54 seamless geology in ESRI ArcGIS.

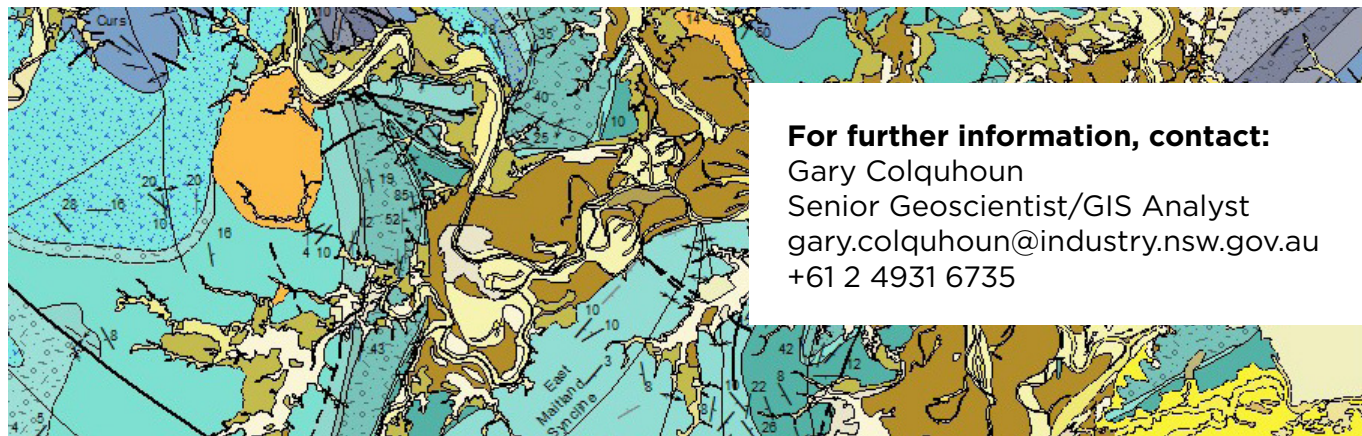


The Zone 54 seamless geology data package is the 2nd major data release of the 5 year project to produce the best available seamless geology for the whole of New South Wales. The first output from the project was released in February 2015 (Zone 56 seamless geology) and both packages are now available for free download from the Department of Industry website. The project will now move to Zone 55, which has been divided into 2 parts due to its size. The next major releases will be Zone 55 east (anticipated in Aug-Sept 2017) and Zone 55 west (anticipated in mid 2018). On completion of the project, the final NSW seamless geology dataset will be updated and refined as new geological mapping data becomes available.



The new dataset is available in ESRI ArcGIS (10.3.1 or later), MapInfo (11.5 or later) and QGIS (2.12.0 or later) formats. It can be downloaded from

<http://www.resourcesandenergy.nsw.gov.au/miners-and-explorers/geoscience-information/products-and-data/geoscience-data-resources/geoscience-data-packages/data/seamless-geology-data-package-zone-54>



The information contained in this publication is based on knowledge and understanding at time of writing (January 2017). Because of advances in knowledge, users are reminded of the need to ensure that information upon which they rely is up to date. The information contained in this publication may not be or may no longer be aligned with government policy nor does the publication indicate or imply government policy. No warranty about the accuracy, currency or completeness of any information contained in this document is inferred (including, without limitation, any information in the document provided by third parties). While all reasonable care has been taken in the compilation, to the extent permitted by law, the State of New South Wales exclude all liability for the accuracy or completeness of the information, or for any injury, loss, or damage whatsoever (including without limitation liability for negligence and consequential losses) suffered by any person acting, or purporting to act, in reliance upon anything contained herein. Users should rely upon their own advice, skills, interpretation and experience in applying information contained in this publication. The product trade names in this publication are supplied on the understanding that no preference between equivalent products is intended and that the inclusion of a product name does not imply endorsement by the State of New South Wales over any equivalent product.